



Knowledge for Leadership –
The Road Safety Performance Index
Assessing road safety performance across Europe

PIN Talk in Oslo
27 May 2010

Presentation outline

- ➔ Introduce ETSC and its Road Safety PIN Programme
- ➔ Present some of the findings relevant for Norway
- ① General road safety indicators
- ② Progress in reducing road deaths and serious injuries
- ③ Behaviour indicators (mean speed per road type, drink-driving, seat belt use)

Introduction to ETSC

- ➔ The European Transport Safety Council (ETSC) is a non-governmental organisation promoting an independent science-based approach to road safety policy
- ➔ Supported in our work by 41 member organisations across Europe (➔ [Trygg Trafikk](#))
- ➔ Funded by our members, the European Commission and corporate sponsors
- ➔ Bringing together practitioners, researchers, policy-makers and parliamentarians from across the whole of the EU

👉 www.etsc.eu 👈

ETSC's Road Safety PIN

Steering group:



Vägverket



Statens vegvesen

TOYOTA



SWOV
INSTITUTE FOR
ROAD SAFETY RESEARCH

vti

Loughborough
University



Panel members:

Mr. Rune Elvik (NO)

Mr. João Cardoso (PT)

Mr. Peter Mak (NL)

Mr. Michael Rowland (IE)

Ms. Anna Vadeby (SE)

Ms. Jacqueline Lacroix (DE)

Mr. Jesper Sølund (DK)

Mr. Aldis Lama (LV)

Ms. Ilona Buttler (PL)

Ms. Pilar Zori (ES)

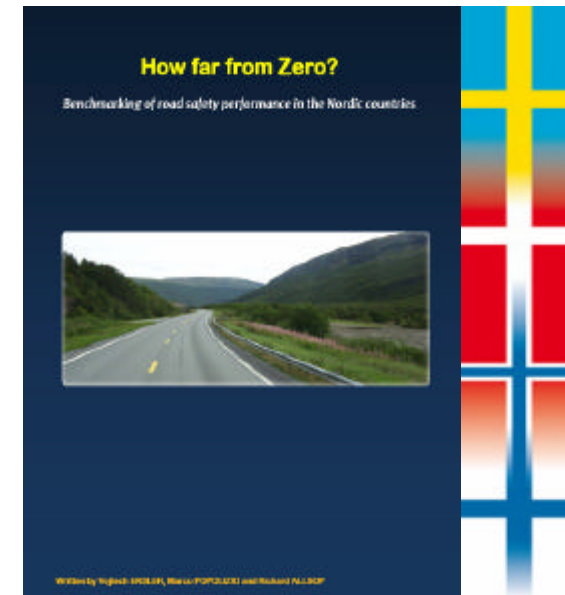
Mr. Klaus Machata (AT)

Mr. Jean Chapelon (FR)

.....






PIN Deliverables

PIN Flashes, PIN Annual Reports
→ Overviews of particular topics



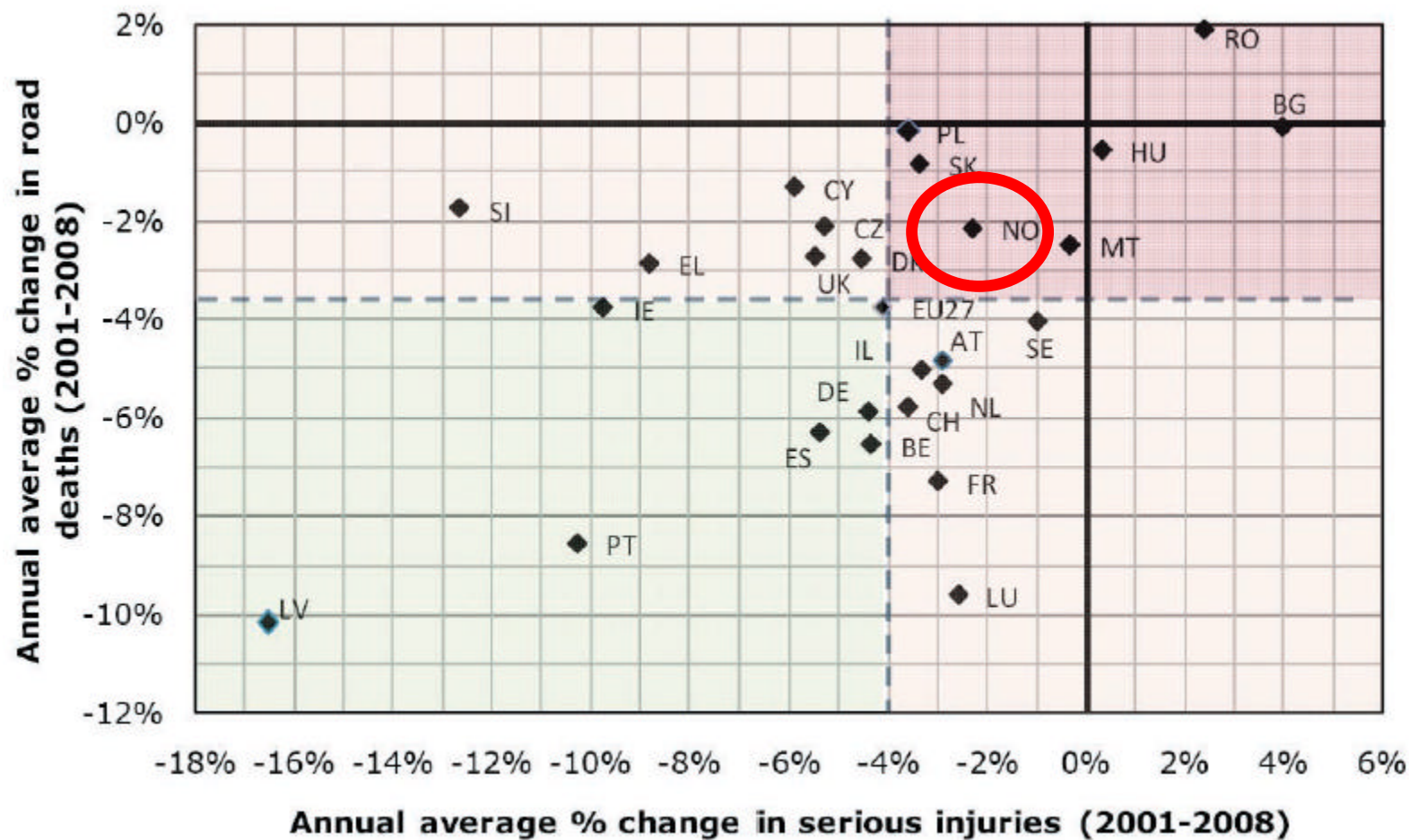
PIN Talks → National debates to encourage road safety efforts!

General road safety indicators '06-'08

Country	Deaths per million population	Deaths per billion vehicle-km	Deaths per million motor vehicles
 Denmark	68	7.6	136
 Finland	67	6.7	114
 Iceland	63	6.4	78
 Norway	52	6.4	78
 Sweden	48	5.7	83
Nordic	57	6.5	99
EU-27	84	n/a	n/a

Source: How far from Zero?

Progress in reducing Road deaths & Serious injuries



EU: -3.3% road deaths & -4.1% serious injuries

Norway: -2.1% road deaths & -2.3% serious injuries

The three main killers on EU roads



☠ Inappropriate or excessive **speed**

*More than **2,200** road deaths could be prevented each year if average speeds dropped by only **1km/h** on all roads across the EU.*



☠ Driving under the influence of **alcohol** ? alcohol&drugs / drugs

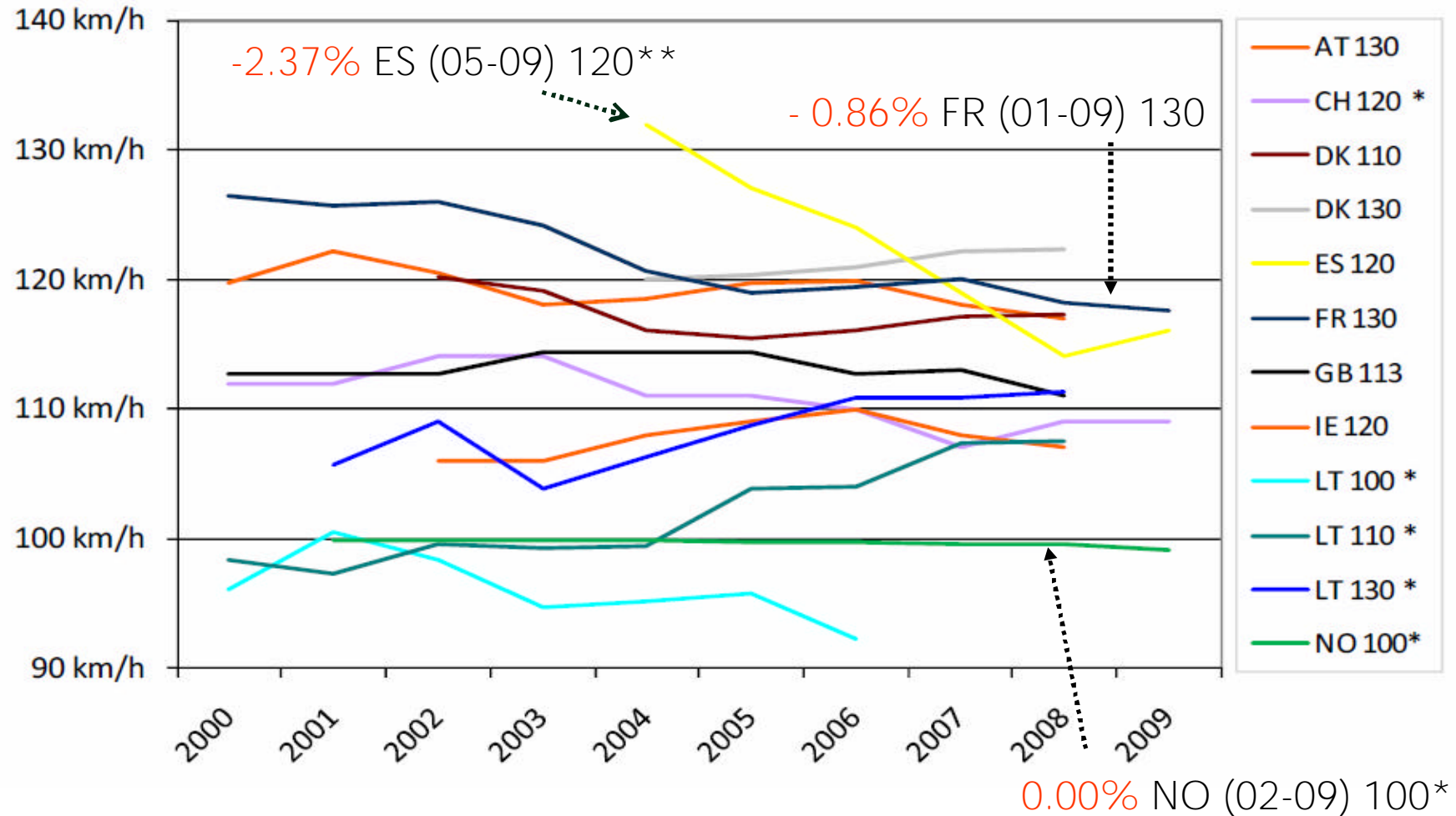
*At least **3,500** deaths could have been prevented if accident-involved drivers reported to be driving over the limit had been sober.*

☠ Fail to wear **seat belts**

*Around **12,400** car occupants survived serious crashes in 2009 because they wore a seat belt. Another **2,500** deaths could have been prevented if **99%** of occupant had been wearing a seat belt.*

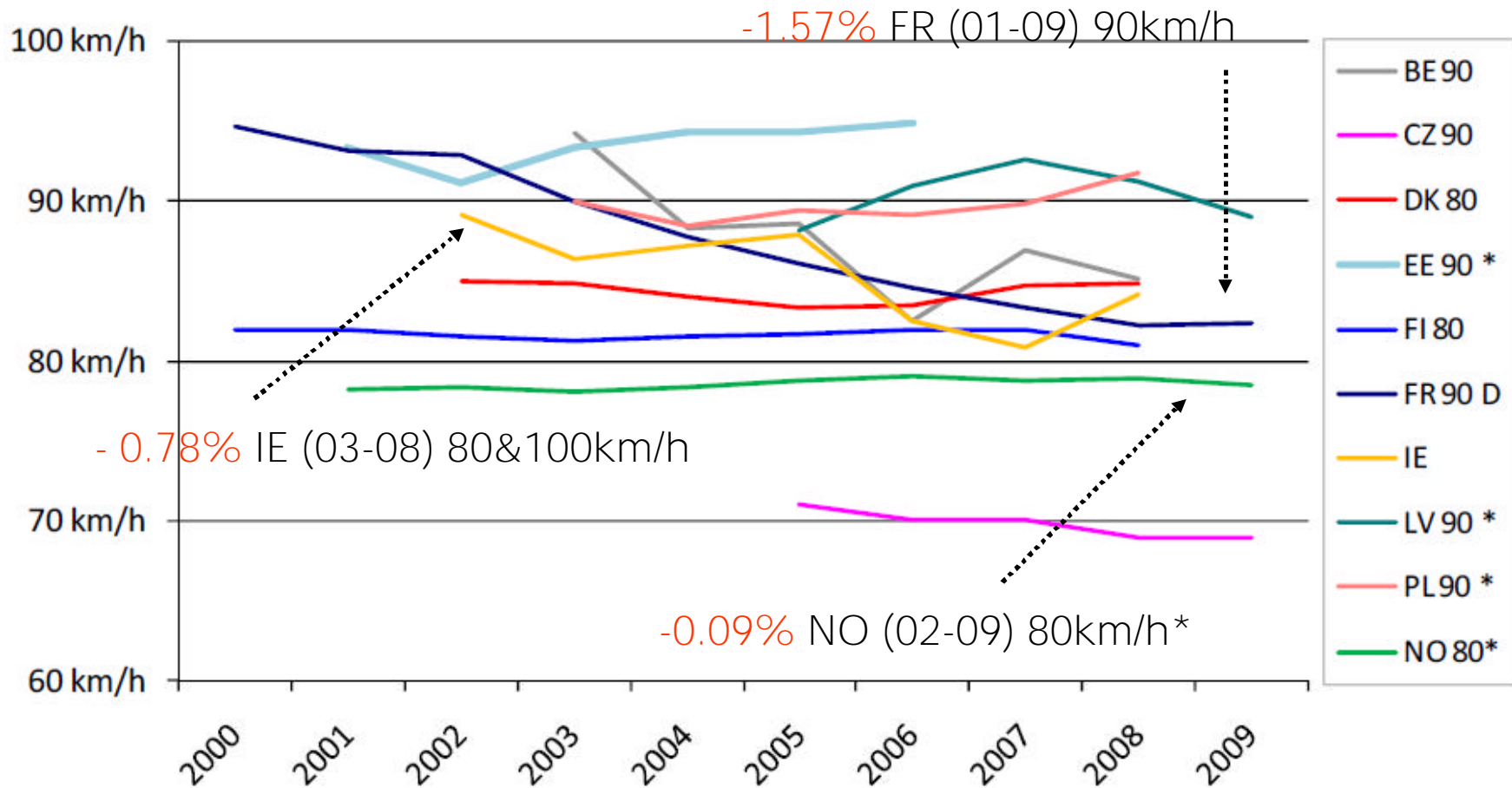
Progress in reducing speed (I)

Mean speed of cars and vans on motorways and yearly average % change in mean speed in some European countries.



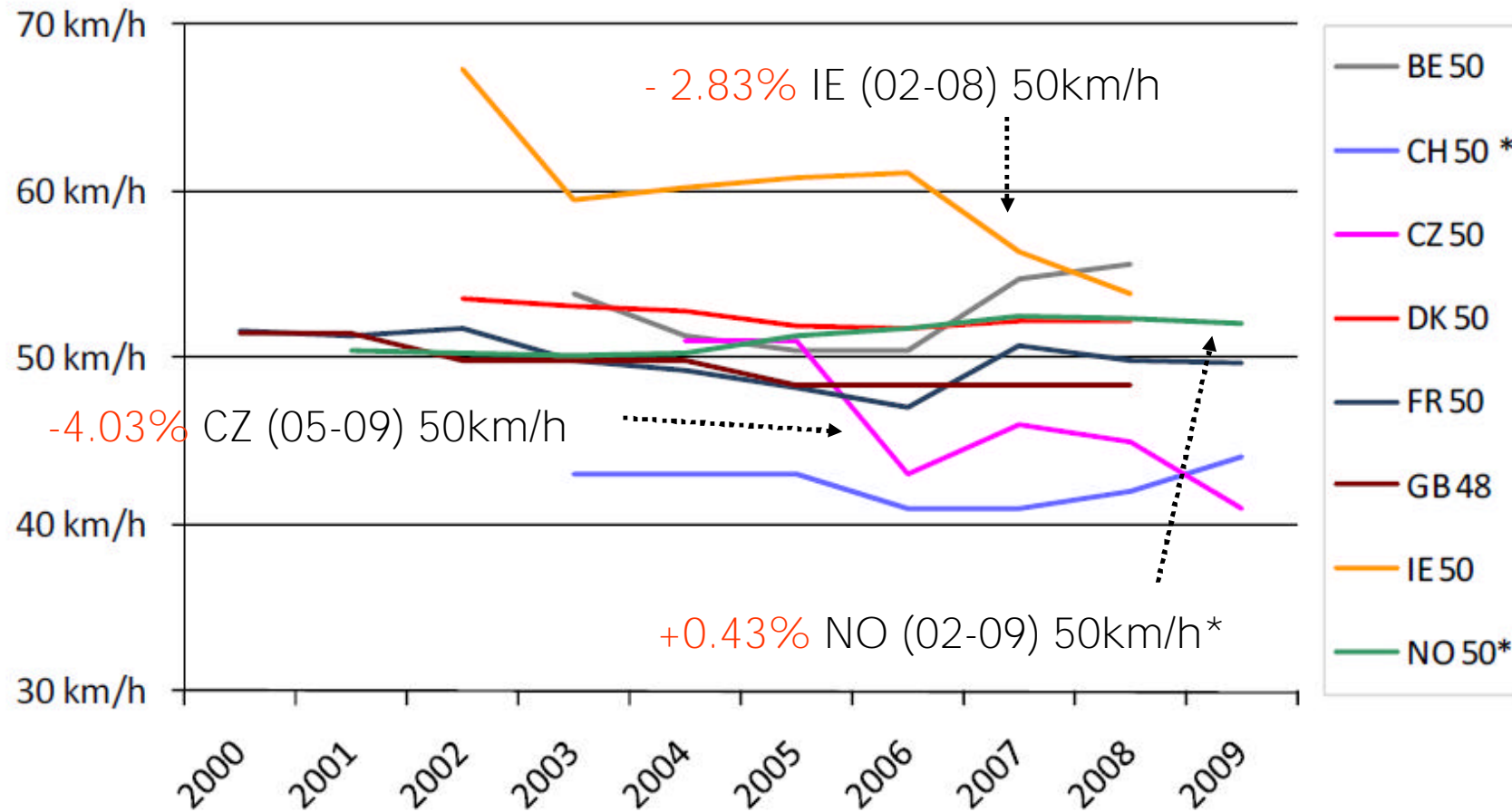
Progress in reducing speed (II)

Mean speed of cars and vans on rural roads and yearly average % change in mean speed in some European countries.



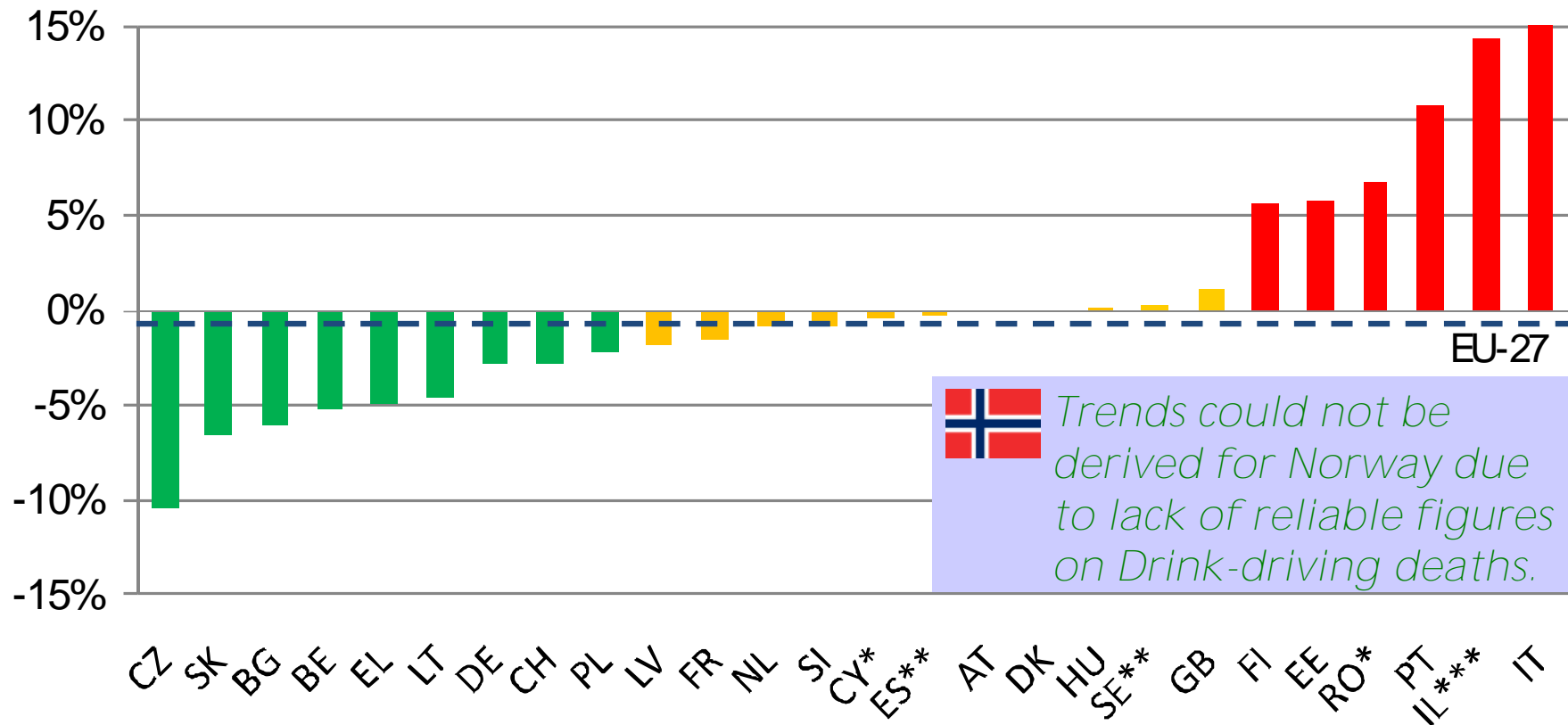
Progress in reducing speed (III)

Mean speed of cars and vans on urban roads and yearly average % change in mean speed in some European countries.



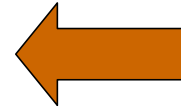
Progress in reducing Drink driving

Difference between the average annual % reduction in deaths attributed to alcohol and the corresponding reduction for other deaths (over 2001-2008)



Enforcement

Country	Code	Yearly speed tickets per thousand population		
		2006	2007	2008
The Netherlands	NL	543	595	558
Austria	AT	327	458	456
Switzerland	CH	350	335	n/a
France	FR	114	127	138
Cyprus	CY	87	165	137
Slovenia	SI	n/a	n/a	72
Norway	NO	52	52	51
Romania	RO	n/a	n/a	
Finland	FI	38	42	
Latvia	LV	41	45	
Denmark	DK	47	48	
Spain	ES	17	27	
Luxembourg	LU	48	49	
Ireland	IE	n/a	45	
Poland	PL	28	32	
Greece	EL	34	32	
Israel	IL	22	22	
Hungary	HU	17	16	
Sweden	SE	21	24	
Slovakia	SK	25	21	
Italy	IT	23	25	
Bulgaria	BG	13	18	
Czech Republic	CZ	30	21	
Lithuania	LT	18	20	
Portugal	PT	9	n/a	



Speed – Yearly speed tickets per 1,000 pop.



Alcohol – Roadside police tests per 1,000 pop.

Country	Code	2006		2007		2008	
		Roadside police tests per 1000 population	Percentage above legal limit	Roadside police tests per 1000 population	Percentage above legal limit	Roadside police tests per 1000 population	Percentage above legal limit
Finland	FI	n/a	n/a	318	1.6%	385	1.3%
Norway	NO	n/a	n/a	n/a	n/a	338	n/a
Sweden	SE	264	0.9%	292	0.8%	287	0.8%
Slovenia	SI	162	8.0%	191	7.3%	200	5.8%
France	FR	186	3.2%	182	3.3%	190	3.3%
Cyprus	CY	90	6.2%	149	6.8%	182	5.9%
Greece	EL	118	3.4%	143	2.9%	135	3.1%
Hungary	HU	144	2.9%	143	3.2%	130	3.1%
Ireland	IE	n/a	n/a	113	4.1%	128	3.2%
Spain	ES	88	2.5%	96	2.2%	112	1.8%
Estonia	EE	76	0.9%	68	1.0%	95	1.1%
Austria	AT	56	9.4%	77	7.0%	87	5.8%
Israel	IL	4	16.5%	24	5.1%	69	2.2%
Portugal	PT	48	7.3%	56	5.6%	63	5.9%
Poland	PL	n/a	n/a	n/a	n/a	47	9.5%
Lithuania	LT	31	1.4%	34	1.6%	40	1.7%
Denmark	DK	n/a	n/a	n/a	n/a	36	n/a
Italy	IT	4	n/a	12	n/a	23	n/a
Great Britain	GB	10	17.4%	10	16.3%	NA	n/a

Driving under the influence of...

- **ALCOHOL** – About 11.5% road deaths are alcohol related (25% EC estimate).
- **DRUGS** – Picture still unclear, the extent of drug-driving is not studied in many European countries.



"No comparable figures are available for road accidents relating to illicit drugs and psychoactive medicines" (EMCDDA)

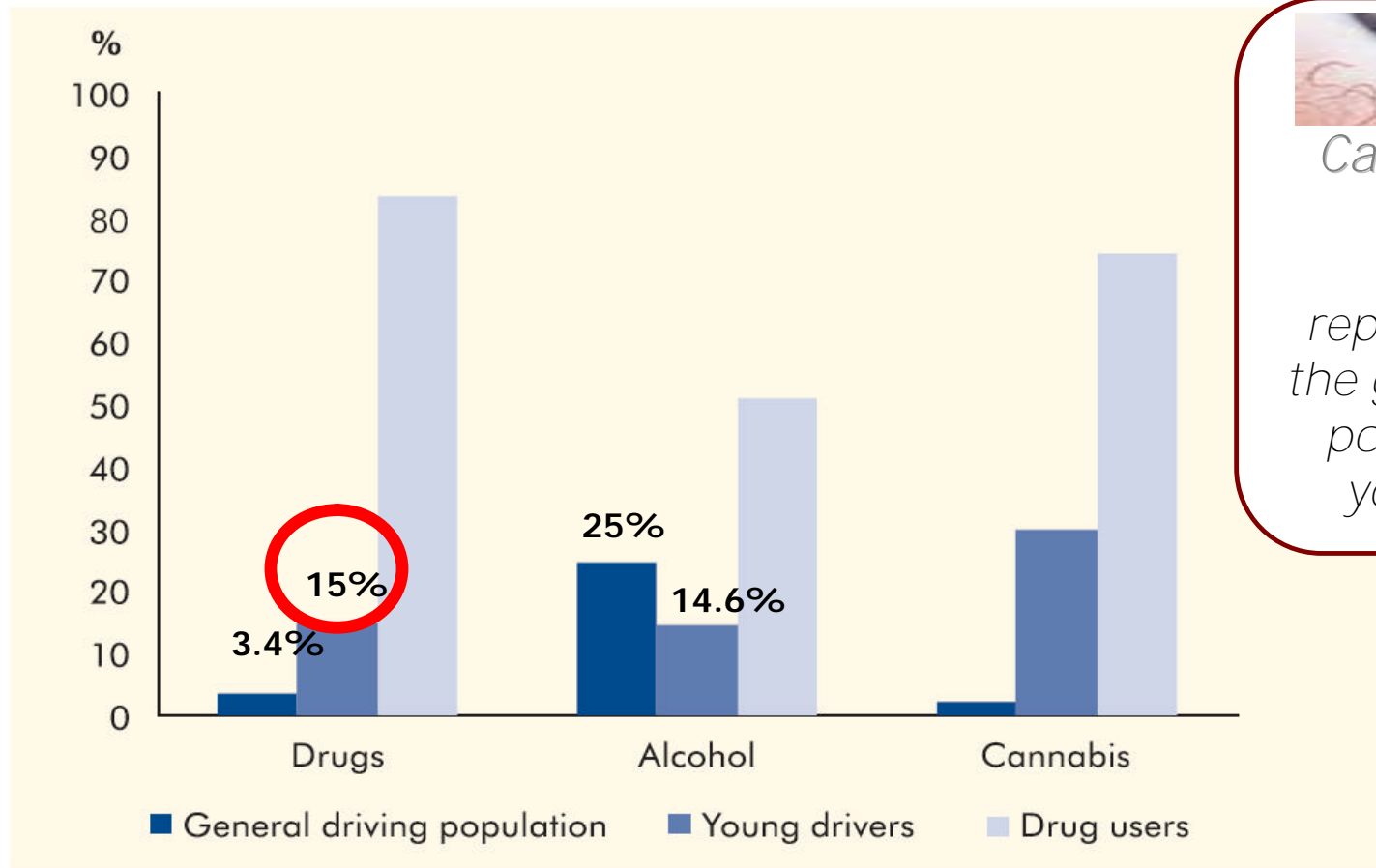


Not all drivers in crashes are tested for alcohol (BE 20%, UK 59%, FR 88%) and even less drivers in crashes are tested for drugs. TISPOL campaign of June 2009 found that 1.65% of journeys are associated with alcohol above legal BAC limit and 0.14% with alcohol & drugs.



Illicit drugs

A concern particularly for young drivers

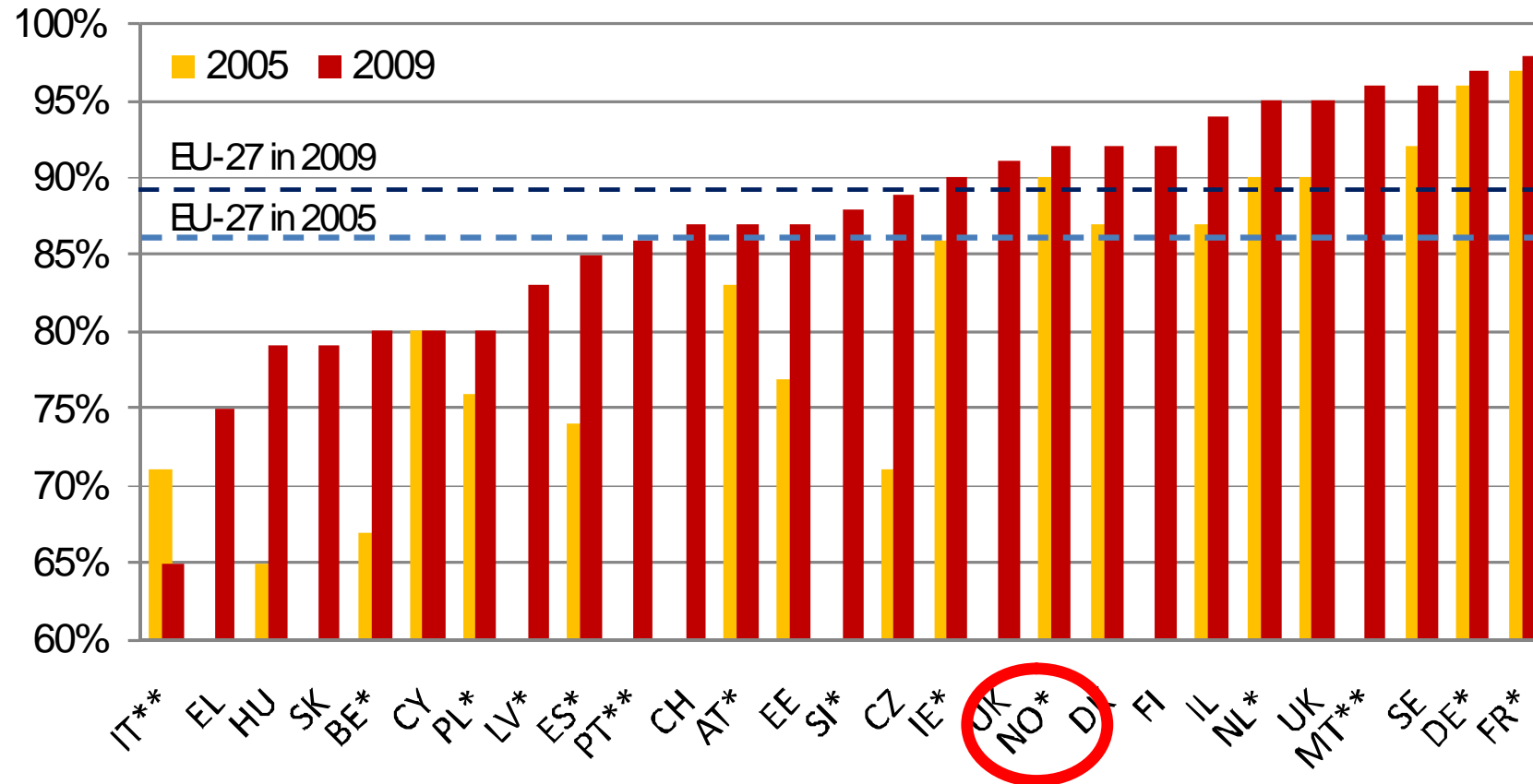


Cannabis is the drug most frequently reported by both the general driving population and young drivers

Figure 4: Median of the percentages of the general driving population, young drivers and drug users that report ever having driven under the influence of drugs, alcohol or cannabis (see Tables A7–A9 in the Appendix for survey details).

Source: *Drug use, impaired driving and traffic accidents*, EMCDDA (2008)

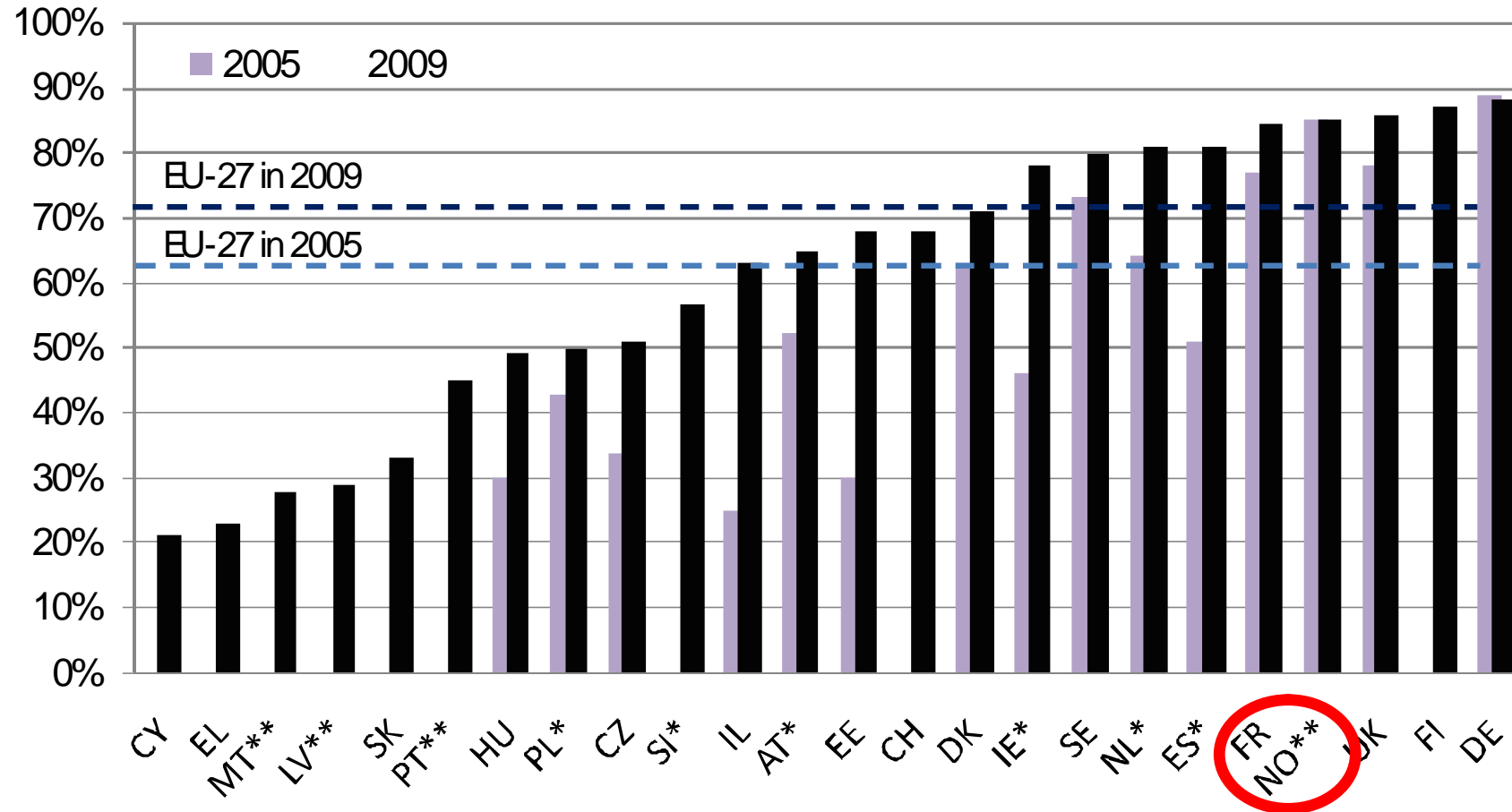
Seat belt use on front seats



Seat belt wearing rates on front seats of light vehicles (last available year) with 2005 data for comparison.

*2008; **2007

Seat belt use on rear seats



Seat belt wearing rates in rear seats of light vehicles in 2009 with 2005 data for comparison.

*2008; **SafetyNet

Road Safety Performance Index

Thank you very much for your attention!



Marco POPOLIZIO

Project Officer

European Transport Safety Council (ETSC)

Av. des Celtes 58 B-1040 Brussels

T: +32(0)2.230.41.06 – F: +32(0)2.230.42.15

marco.popolizio@etsc.eu -- www.etsc.eu

